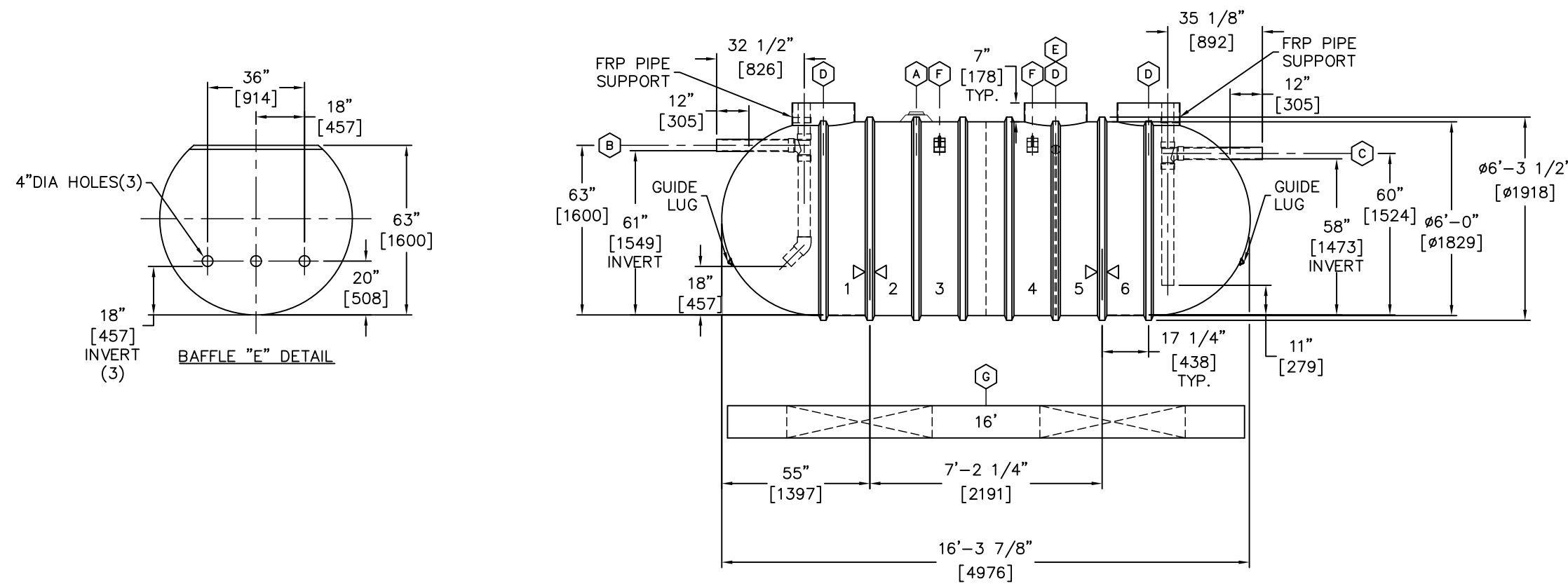


NOTES:

1. ALL DIMENSIONS SHOWN ARE IN FEET/INCHES.  
DIMENSIONS IN BRACKETS ARE IN mm.
2. CALIFORNIA INSTALLATION.
3. INVERT DIMENSION FROM TANK I.D.
4. NOMINAL TANK WEIGHT : 2,600 lbs. (1,200 kg.).



ITEM	QTY	DESCRIPTION
(A)	1	4"NPT MONITOR FITTING
(B)	1	4"DIA SCH 40 PVC INLET PIPE WITH INTERNAL SANITARY TEE, PIPES & 45° ELBOW
(C)	1	4"DIA SCH 40 PVC OUTLET PIPE WITH INTERNAL SANITARY TEE & PIPES
(D)	3	RISER PIPE, 23 3/8" O.D., FOR 24"(NOMINAL) ACCESS OPENING
(E)	1	63" HIGH PLATE BAFFLE WITH 3-4"DIA HOLES (18" INVERT)
(F)	2	LIFTING LUG (10" x 4") 25" 25"
(G)	2	16' PREFABRICATED CONCRETE DEADMEN KIT
△△	2	HOLD DOWN STRAP LOCATION

00		REVISION DESCRIPTION			
DRN	DATE	CHK'D	DATE	APPR'D	DATE
-	-	-	-	-	-
<b>XERXES</b>					
DR	DATE	TITLE			
LJB	05-02-23	6' DIA DW (CALI)			
		CAP. 3,000 GALLONS			
		MODEL 01-6-2500-DW			
		PHOENIX			
SALES MANAGER		DR. SIZE	DR. NUMBER	REV	
DAVID HOLMES		B	XS-003919	00	
		SCALE:	N.T.S.	SHT 1 OF 1	
INDUSTRY TYPE: M210 PLUMBING ENGINEERED SOLUTIONS					