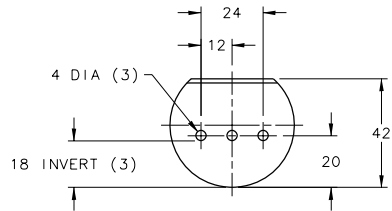
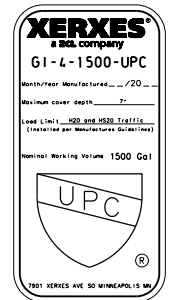
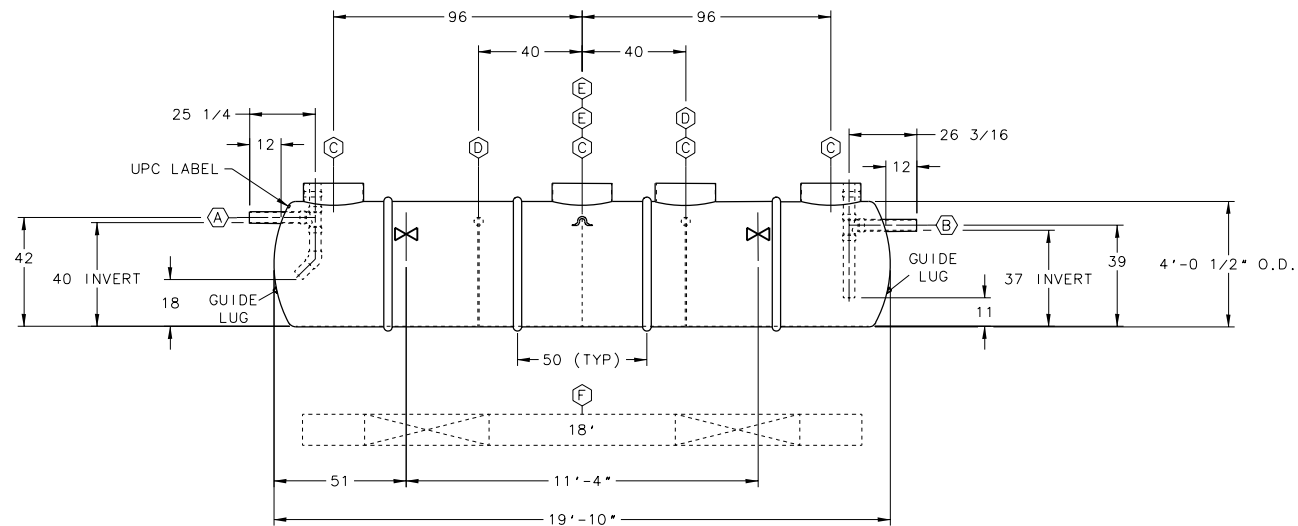


NOTE:

- 1 - INVERT DIMENSION FROM TANK I.D.
- 2 - TANK HAS IAPMO LABEL.
- 3 - OPTIONAL PREFABRICATED DEADMEN SHOWN. IF DEADMEN ARE ADDED TO THE ORDER, ACCOMMODATIONS MAY BE REQUIRED TO SECURE THE STRAPS TO THE DEADMEN.
- 4 - NOMINAL TANK WEIGHT: 1,700 LBS.



BAFFLE DETAIL



GI RATED CAPACITY
1500 GALLONS

ITEM	QTY	DESCRIPTION
(A)	1	4"DIA SCH 40 PVC INLET PIPE WITH INTERNAL SANITARY TEE, PIPES & 45° ELBOW
(B)	1	4"DIA SCH 40 PVC OUTLET PIPE WITH INTERNAL SANITARY TEE & PIPES
(C)	4	RISER PIPE, 23 3/8" O.D., FOR 24"(NOMINAL) ACCESS OPENING
(D)	2	7/8 PLATE BAFFLE (18" INVERT) WITH 3-4"DIA HOLES
(E)	2	LIFTING LUG
(F)	2	18' PREFABRICATED CONCRETE DEADMEN (OPTIONAL)
(X)	2	HOLD DOWN STRAP LOCATION

0		REVISION DESCRIPTION			
REV	DATE	CHK'D	DATE	APP'D	DATE
XERXES a hcl company					
DRG	DATE	TITLE	4" DIA SW		
DWG	DATE		CAP. 1,800 GALLONS		
APP'D	DATE		MODEL GI-4-1500-PHX-UPC		
			PHOENIX		
SALES MANAGER	DR. SIZE OR. NUMBER	REV			
Dave	D	658-544	00		
HOLMES	SCALE: 1/2"=1'-0"	SHT 1 OF 1			
INDUSTRY TYPE: M210 PLUMBING ENGINEERED SOLUTIONS					