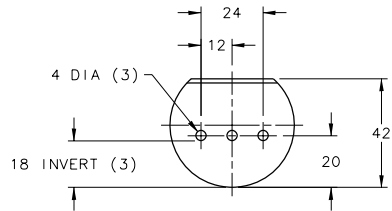
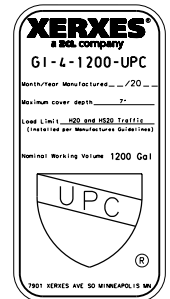
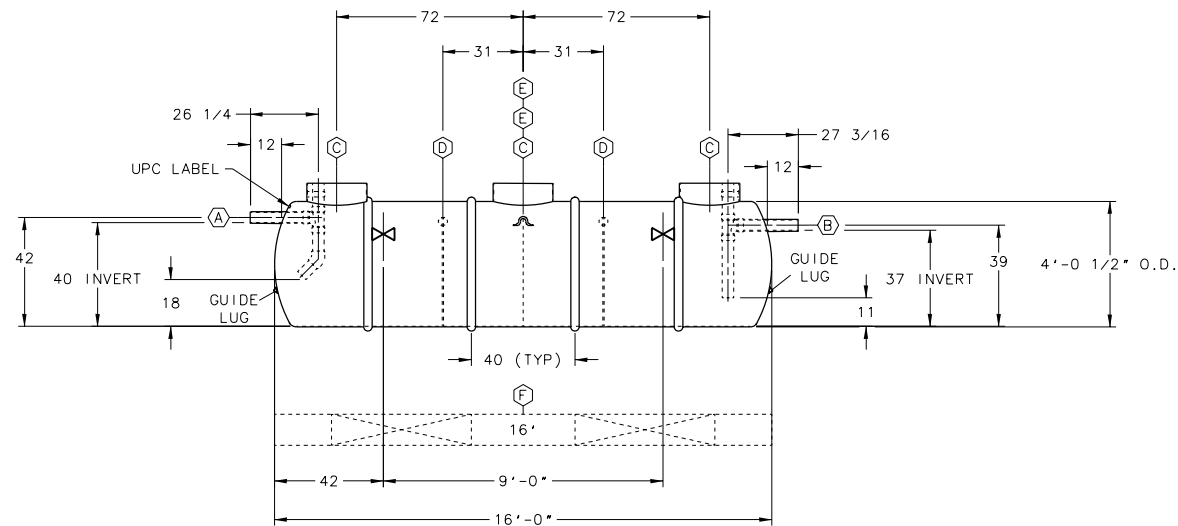


NOTE:

- 1 - INVERT DIMENSION FROM TANK I.D.
- 2 - TANK HAS IAPMO LABEL.
- 3 - OPTIONAL PREFABRICATED DEADMEN SHOWN. IF DEADMEN ARE ADDED TO THE ORDER, ACCOMMODATIONS MAY BE REQUIRED TO SECURE THE STRAPS TO THE DEADMEN.
- 4 - NOMINAL TANK WEIGHT: 1,500 LBS.



BAFFLE DETAIL



GI RATED CAPACITY
1200 GALLONS

ITEM	QTY	DESCRIPTION
(A)	1	4\"DIA SCH 40 PVC INLET PIPE WITH INTERNAL SANITARY TEE, PIPES & 45° ELBOW
(B)	1	4\"DIA SCH 40 PVC OUTLET PIPE WITH INTERNAL SANITARY TEE & PIPES
(C)	3	RISER PIPE, 23 3/8\" O.D., FOR 24\"(NOMINAL) ACCESS OPENING
(D)	2	7/8 PLATE BAFFLE (18\" INVERT) WITH 3-4\"DIA HOLES
(E)	2	LIFTING LUG
(F)	2	16' PREFABRICATED CONCRETE DEADMEN (OPTIONAL)
(X)	2	HOLD DOWN STRAP LOCATION

0		REVISION DESCRIPTION	
REV	DATE	CHK'D	DATE
XERXES a hcl company			
DRG	DATE	TITLE	REV
DAG	8-14-18	4\" DIA SW	
CHK'D		CAP. 1,500 GALLONS	
APPR'D		MODEL GI-4-1200-PHX-UPC	
		PHOENIX	
SALES MANAGER	DR. SIZE OR. NUMBER	REV	
Dave	D 658-542	00	
Holmes	SCALE: 1/2\"=1'-0\"		
INDUSTRY TYPE: M210 PLUMBING ENGINEERED SOLUTIONS			