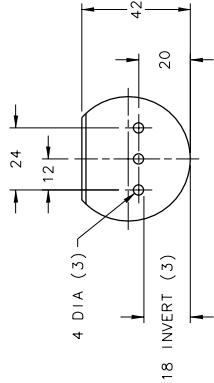
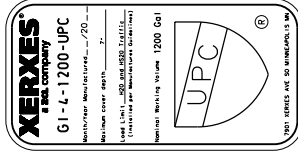
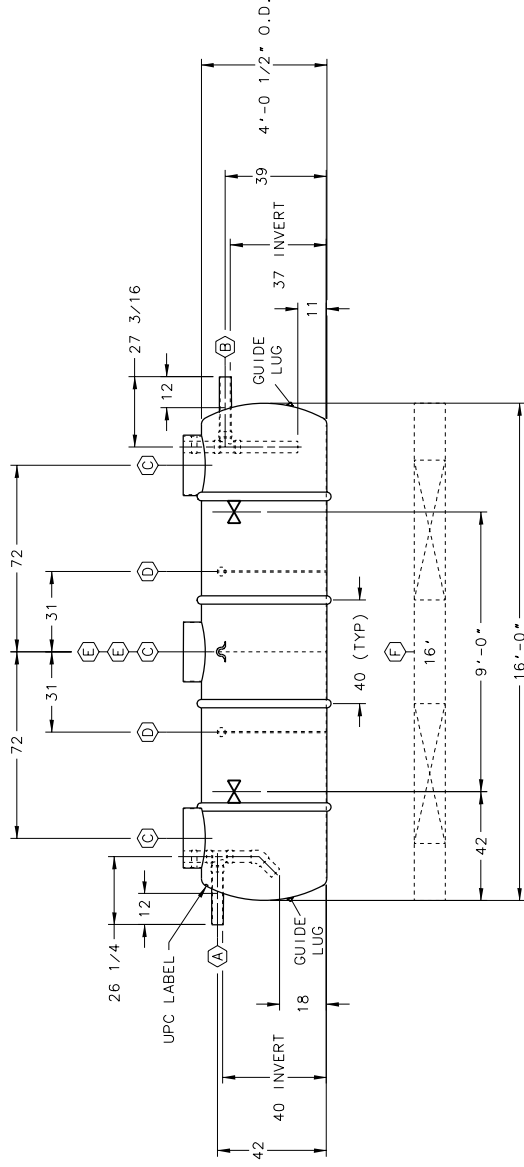


NOTE:

- 1 - INVERT DIMENSION FROM TANK I. D.
- 2 - TANK HAS IAPMO LABEL.
- 3 - OPTIONAL PREFABRICATED DEADMEN SHOWN. IF DEADMEN ARE ADDED TO THE ORDER, ACCOMMODATIONS MAY BE REQUIRED TO SECURE THE STRAPS TO THE DEADMEN.
- 4 - NOMINAL TANK WEIGHT: 1,500 LBS.



BAFFLE DETAIL



GI RATED CAPACITY
1200 GALLONS

ITEM	QTY	DESCRIPTION
(A)	1	4"DIA SCH 40 PVC INLET PIPE WITH INTERNAL SANITARY TEE, PIPES & 45° ELBOW
(B)	1	4"DIA SCH 40 PVC OUTLET PIPE WITH INTERNAL SANITARY TEE & PIPES
(C)	3	RISER PIPE, 23 3/8" O.D., FOR 24"(NOMINAL) ACCESS OPENING
(D)	2	7/8 PLATE BAFFLE (18" INVERT) WITH 3-4"DIA HOLES
(E)	2	LIFTING LUG
(F)	2	16" PREFABRICATED CONCRETE DEADMEN (OPTIONAL)
(X)	2	HOLD DOWN STRAP LOCATION

0 REVISION DESCRIPTION		REV	DATE	BY	CHK
XERXES a zcl company					
TITLE	4" DIA SW	DATE			
NO. TAG	1-13	DATE			
TANK'S		DATE			
MODEL	GI-4-1200-PHX-UPC				
TANK NUMBER	PHOENIX				
DOVE	658-542				
INDUSTRY TYPE:	M210 PLUMBING ENGINEERED SOLUTIONS				