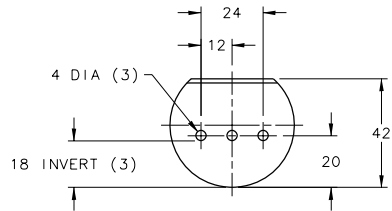
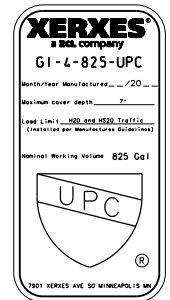
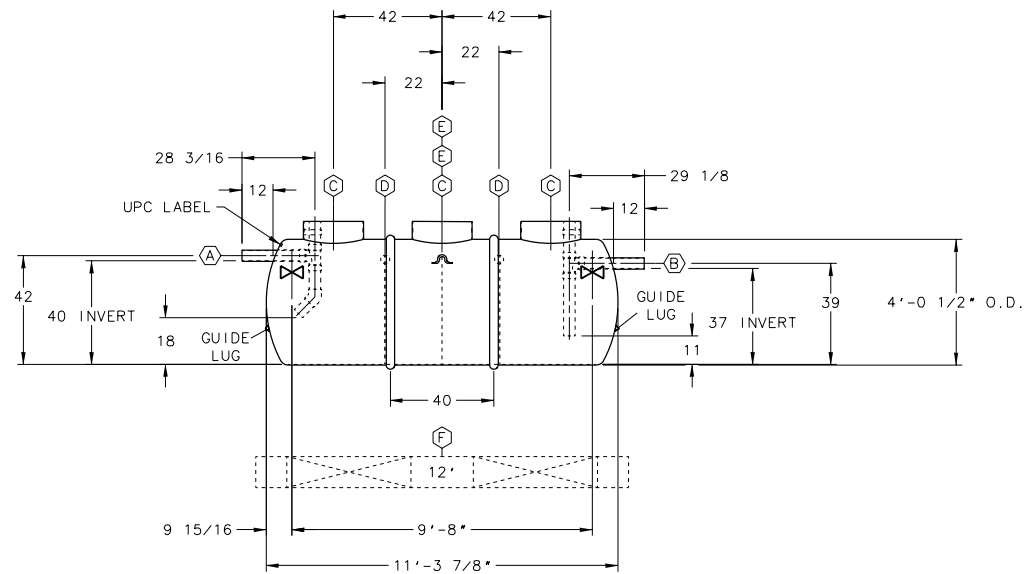


NOTE:

- 1 - INVERT DIMENSION FROM TANK I.D.
- 2 - TANK HAS IAPMO LABEL.
- 3 - OPTIONAL PREFABRICATED DEADMEN SHOWN. IF DEADMEN ARE ADDED TO THE ORDER, ACCOMMODATIONS MAY BE REQUIRED TO SECURE THE STRAPS TO THE DEADMEN.
- 4 - NOMINAL TANK WEIGHT: 900 LBS.



**BAFFLE DETAIL**



**GI RATED CAPACITY**  
825 GALLONS

ITEM	QTY	DESCRIPTION
(A)	1	4"DIA SCH 40 PVC INLET PIPE WITH INTERNAL SANITARY TEE, PIPES & 45° ELBOW
(B)	1	4"DIA SCH 40 PVC OUTLET PIPE WITH INTERNAL SANITARY TEE & PIPES
(C)	3	RISER PIPE, 2 3/8" O.D., FOR 24"(NOMINAL) ACCESS OPENING
(D)	2	7/8 PLATE BAFFLE (18" INVERT) WITH 3-4"DIA HOLES
(E)	2	LIFTING LUG
(F)	2	12' PREFABRICATED CONCRETE DEADMEN (OPTIONAL)
(X)	2	HOLD DOWN STRAP LOCATION

0		REVISION DESCRIPTION	
REV	DATE	CHK'D	DATE
<b>XERXES</b> a <b>zcl</b> company			
DRG	DATE	TITLE	REV
DAG	8-14-18	4" DIA SW	
CHK'D	DATE	CAP. 1,000 GALLONS	
APP'D	DATE	MODEL G1-4-825-PHX-UPC	
		PHOENIX	
SALES MANAGER	DR. SIZE OR NUMBER	REV	
Dave	D 658-540	00	
HOLMES	SCALE: 1/2"=1'-0"	SHT 1 OF 1	
INDUSTRY TYPE: M210 PLUMBING ENGINEERED SOLUTIONS			