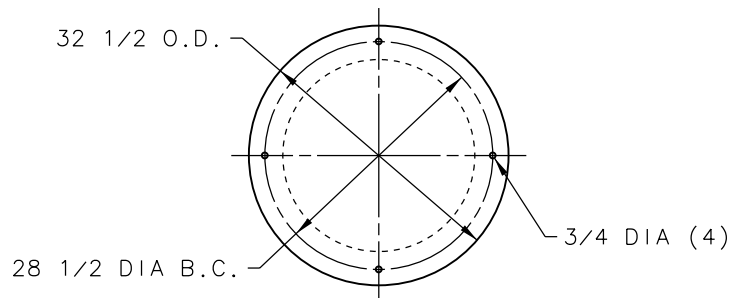


### HEIGHT OPTIONS

- 4' AST-H 63 1/2"
- 5' AST-H 67 3/8"
- 6' AST-H 91 1/2"
- SPECIAL \_\_\_\_\_ HIGH

### GELCOAT OPTIONS

- WHITE
- TAN
- GREEN



**BOTTOM FLANGE DETAIL**

<b>ZCL   XERXES®</b>	
TITLE 24" DIA SAMPLING PORT FOR 4', 5' & 6' AST-H	
DATE 11-18	DR. NO. S12-018.03